

# Accessories

## BRING YOU A GLOBAL SOLUTION

Our main aim is to answer all specific requirements of your installation by bringing you a global solution. CASTEL can offer you multiple complementary accessories for its intercom and access control systems ranges.

## VIDEO



**MONITEUR COUL 10"**  
Colour Monitor 10" VGA and BNC  
REF 310.0000

**ALIM MONITEUR 10"**  
10" colour monitor power supply (230V/12V 1.2A)  
REF 310.0010



**MONITEUR COUL 21"**  
Colour Monitor 21" VGA and BNC  
REF 310.0100



**DVR 8 CH**  
Numeric multiplexer 8 channels without hard drive and 8 alarm inputs  
REF 310.2000

**DVR 16 CH**  
Numeric multiplexer 16 channels without hard drive and 16 alarm inputs  
REF 310.2100



**KIT ÉMETTEUR/RÉCEPTEUR**  
Transmitter receiver Balun video kit, 1 pair Cat 5  
REF 310.3000

## ACCESS CONTROL



**CLAVIER AUTONOME**  
Polycarbonate standalone coded keyboard (IP65) with 2 relays - 1 buzzer  
REF 330.0000

- > Blue backlight keys - 3 Leds
- > Tamper function
- > Programming through the front panel via a master code
- > Capacity: 100 user codes
- > Dimensions 120 x 36 x 83 mm - Power supply 12/24V 0.25V not included



**CLAVIER AUTONOME AV**  
Zamak standalone coded keyboard (IP65 - IK10) with 2 relays - 1 buzzer  
REF 330.0050

- > Blue backlight keys - 3 Leds
- > Tamper function
- > Programming through the front panel via a master code
- > Capacity: 100 user codes
- > Dimensions 120 x 36 x 83 mm
- > Power supply 12/24V 0.25V not included



**BP SORTIE**  
Exit push button  
REF 330.1000

- > Integration inside housing box Ø 60 mm
- > Brush stainless steel front
- > Dimensions 90 x 90 x 1.5 mm



**BP SORTIE H ZAMAK**  
Zamak exit push button - DDA compliant (IP54 - IK09))  
REF 330.1200

- > Sound information through a buzzer and a green led for door opening information
- > Permanent blue led lighting
- > Integration inside housing box Ø 60 mm
- > Optional base for surface mounting (REF 330.1250)
- > Dimensions 90 x 90 x 24 mm (96 x 95 x 39 mm with base)
- > Power supply 12/24V not included



**BBGV DOUBLE CONTACT**  
Green manual trigger with 2 contacts  
REF 320.3000



**VENTOUSE ENCASTRE 300KG 24V**  
Magnetic lock flush mounting standard compliant NFS61937  
REF 320.1200

- > Holding power 3000N
- > Length 230 mm
- > Width 38mm
- > Depth 27mm
- > 24V



**VENTOUSE APPLIQUE 300KG 24V**  
Magnetic lock surface mounting standard compliant NFS61937  
REF 320.1300

- > Holding power 3000N
- > Length 250mm
- > Width 42mm
- > Depth 25mm
- > 24V



**CLAVIER AUTONOME BRAILLE**  
Standalone coded keyboard with backlit (blue) keys with Braille diameter 16 mm - 2 relays  
REF 330.0200

- > Led and operating buzzer
- > Stainless steel vandal proof front panel
- > Flush mounted
- > Programming through the front panel via a master code
- > Dimensions 135 x 100 x 2.5 mm (Flush-mounted with flush box D 40 mm)
- > 140 x 105 x 60 mm (surface-mounted with optional surface box - REF 330.0150 -)
- > Power supply 12V not included

**CEINTURE SAILLIE CLAV. BRAILLE**  
Belt for CLAVIER BRAILLE surface mounting  
REF 330.0150



**BP SORTIE SANS CONTACT**  
Contactless stainless steel exit push button with 2 relays - DDA compliant  
REF 330.1150

> A green led for door opening information

- > Permanent blue led lighting
- > Adjustable detection distance from 3 to 12 cm
- > Relay delay adjustable up to 27.80 seconds or bistable mode (ON/OFF)
- > Integration inside housing box Ø 60 mm
- > Optional base for surface mounting (REF 330.1170)
- > Dimensions 90 x 90 x 38 mm (96 x 95 x 43 mm with base)
- > Power supply 12/24Vdc 35mA not included

**BP SORTIE SANS CONTACT BUZZER**  
Contactless stainless steel output button with 2 relays - DDA compliant - 1 buzzer  
REF 330.1160

**FOND SAILLIE BP SS CONTACT**  
Box for BP SORTIE SANS CONTACT surface mounting  
REF 330.1170



**GÂCHE 128 SS TET 10/24V**  
Stationary contact fail secure electrical strike  
REF 320.1700

- > Height 66mm
- > Width 16mm
- > Depth 25.5mm
- > 10/24V



**GÂCHE 128 E SS TET 10/24V**  
Stationary contact fail secure electrical strike  
REF 320.1800

- > Manual opening
- > Height 66mm
- > Width 16mm
- > Depth 25.5mm
- > 10/24V

**ÉQUERRE DE MONTAGE TYPE L**  
Angle bracket for surface mounting magnetic lock  
REF 320.1400

**ÉQUERRE DE MONTAGE TYPE L+Z**  
Angle bracket L and Z combine for surface mounting magnetic lock  
REF 320.1500

**BOITIER CONTROLE DE POSITION**

Position control box - Equipped with a floating contact (standby position information: lock) and a floating contact (security position information: unlock)  
REF 320.1600

**TÉTIÈRE HZ INOX**

Standard stainless faceplate with latch bolt and dead bolt opening  
REF 320.1900

- > Length 250mm
- > Width 25mm
- > Thickness 3mm

CARDS PERSONALISATION



**IMPRIMANTE SF**  
Plastic card printer (simple face) ZENIUS with cardpreso software  
REF 330.5000



**IMPRIMANTE DF**  
Plastic card printer (double faces) PRIMACY with cardpreso software  
REF 330.5700

**KIT NETTOYAGE**  
Cleaning kit Regular EVOLYS (for 1,000 printings)  
REF 330.5300



**WEB CAM**  
Web quick pro webcam  
REF 330.5400

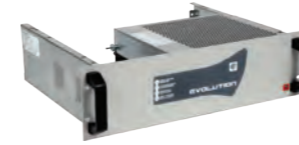
**RUBAN ZENIUS**  
Colour ribbon ZENIUS (for 200 faces)  
REF 330.5200

**RUBAN PRIMACY 2**  
Colour ribbon PRIMACY 2 (for 300 faces)  
REF 330.5250

**LACET**  
Plastic card holder lanyard  
REF 330.5500

**PORTE BADGE**  
Plastic card holder  
REF 330.5600

POWER SUPPLIES



**RACK ALIM 24V24A**  
24V 24A (rack) saved power supply - (batteries)  
REF 350.1000



**RACK ALIM AES24V24A**  
AES 24V 24A (rack) saved power supply - (batteries)  
REF 350.1300



**COFF ALIM 24V16A**  
24V 16A (boxed) saved power supply - (batteries)  
REF 350.1200

**RACK ALIM 12V24A**  
12V 24A (rack) saved power supply - (batteries)  
REF 350.1100



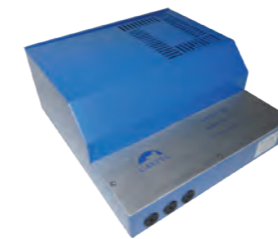
**ALIM AES 24V 3A S**  
AES 24V 3A 7Ah saved power supply - (batteries) standards compliant NFS 61940  
REF 350.1400



**ALIM A24V 6A S**  
24V 6A (boxed) saved power supply - (batteries)  
REF 350.1500



**CONV 24/12V**  
24/12VDC 3A converter  
REF 350.1600



**A12V-3AS**  
12V 3A saved power supply - (batteries)  
REF 350.1700

**A24V-3A5-S8.5**  
24 VDC 3A saved power supply with batteries 8.5 Ah  
REF 110.9200



**A12V-1.25A**  
12 VDC 1.25A power supply (switch mode). Din rail mounting  
REF 110.9300

AUDIO



**HP/MICRO USB BLE**  
Jabra Speak 410 MS Speakerphone USB  
REF 300.0000



**BOUCLE INDUCTION**  
Remote induction loop (integrated in ABS case and stainless steel front panel). Power supply 24V not included.  
REF 540.3100

NETWORK



**IP 2 WIRES CONVERTER**  
Allows to connect a remote IP equipment on two wires. Made of 1 module "receiver" installed upstream and connected to the switch and 1 module "transmitter" installed downstream and connected to the remote IP equipment.  
REF 310.5000-1

**A48V-1,25A-J**  
48VDC 1.25A power supply including jack connector for IP 2 WIRES CONVERTER (distance > from 250m to 500m).  
REF 540.6200

**COLUMNS**



**POTELET VL XE PM**

Aluminium post with a pre cut for small XE intercom unit  
REF [590.9800](#)

- > Height 1.50m
- > RAL colour aluminium 9006
- > Ground plate mounting with 3 dowels Ø 12 not provided

**POTELET VL XE GM**

Aluminium post with a pre cut for big XE intercom unit  
REF [590.9810](#)

**POTELET VL XE TGM**

Aluminium post with a pre cut for very big XE intercom unit  
REF [590.9815](#)

**POTELET VL XE SANS DECOUPE**

Aluminium post without pre cut  
REF [590.9880](#)



**POTELET PL XE PM**

Aluminium post with a pre cut for small XE intercom unit  
REF [590.9820](#)

- > Height 2.20m
- > RAL colour aluminium 9006
- > Ground plate mounting with 3 dowels Ø 12 not provided

**POTELET PL XE GM**

Aluminium post with a pre cut for big XE intercom unit  
REF [590.9830](#)

**POTELET PL XE TGM**

Aluminium post with a pre cut for very big XE intercom unit  
REF [590.9835](#)

**POTELET PL XE SANS DECOUPE**

Aluminium post without pre cut  
REF [590.9890](#)



**POTELET VL/PL XE PM**

Aluminium post with 2 pre cuts for small XE intercom units  
REF [590.9840](#)

- > Height 2.20m
- > RAL colour aluminium 9006
- > Ground plate mounting with 3 dowels Ø 12 not provided

**POTELET VL/PL XE GM**

Aluminium post with 2 pre cuts for big XE intercom units  
REF [590.9850](#)

**POTELET VL PL XE TGM**

Aluminium post with 2 pre cuts for very big XE intercom units  
REF [590.9855](#)

**FOND XE PM MONTAGE POTELET**

Mounting bottom XE intercom small version for assembly on no Castel post  
REF [590.9860](#)

**FOND XE GM MONTAGE POTELET**

Mounting bottom XE intercom large version for assembly on no Castel post  
REF [590.9870](#)

**FOND XE TGM MONTAGE POTELET**

Mounting bottom XE intercom very large version for assembly on no Castel post  
REF [590.9875](#)



**POTELET VL XLESS**

Aluminium post with a pre cut for Xless intercom unit  
REF [340.9860](#)

- > Height 1.50m
- > RAL colour aluminium 9006
- > Ground plate mounting with 3 dowels Ø 12 not provided



**POTELET PL XLESS**

Aluminium post with a pre cut for Xless intercom unit  
REF [340.9870](#)

- > Height 2.20m
- > RAL colour aluminium 9006
- > Ground plate mounting with 3 dowels Ø 12 not provided



**POTELET VL/PL XLESS**

Aluminium post with 2 pre cuts for Xless intercom units  
REF [340.9880](#)

- > Height 2.20m
- > RAL colour aluminium 9006
- > Ground plate mounting with 3 dowels Ø 12 not provided